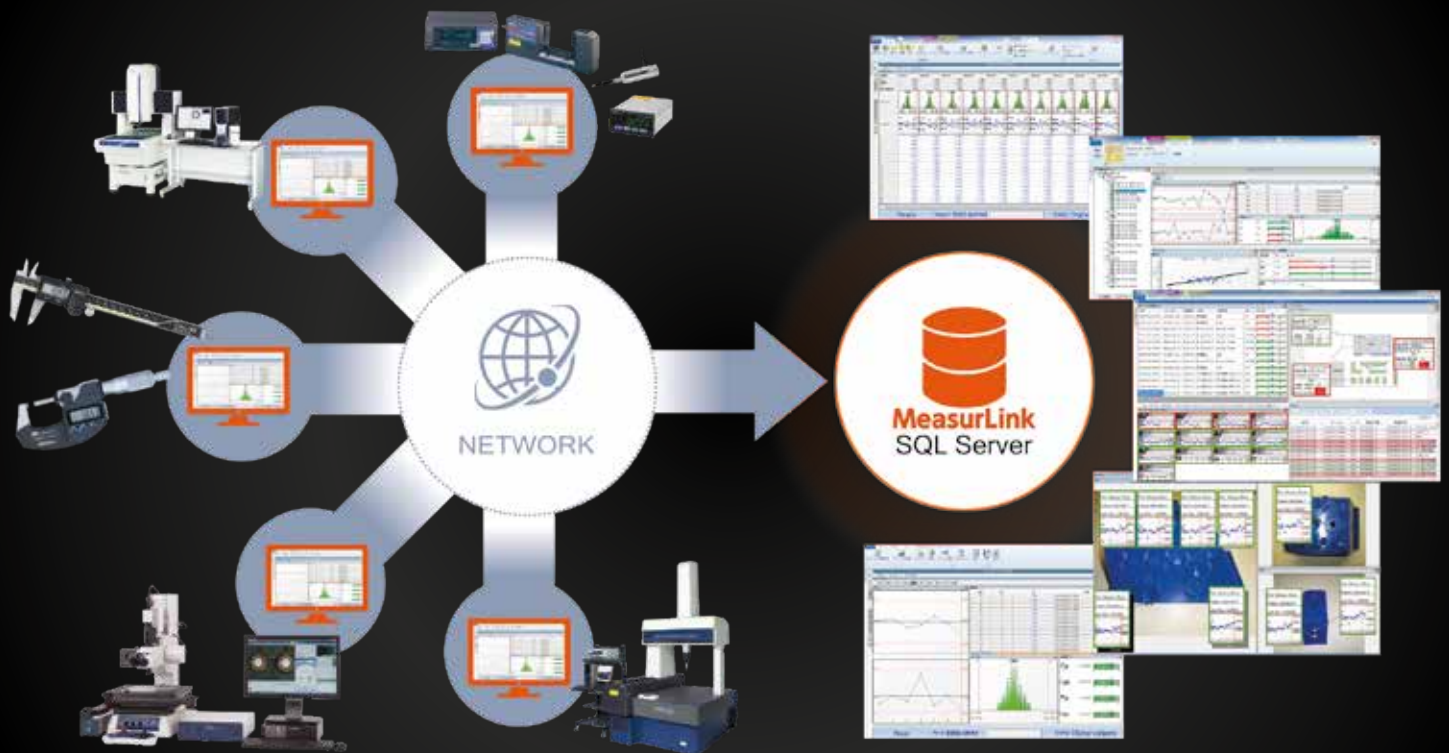


MeasurLink 9

REAL TIME STATISTICAL PROCESS CONTROL AND
DATA COLLECTION SOFTWARE

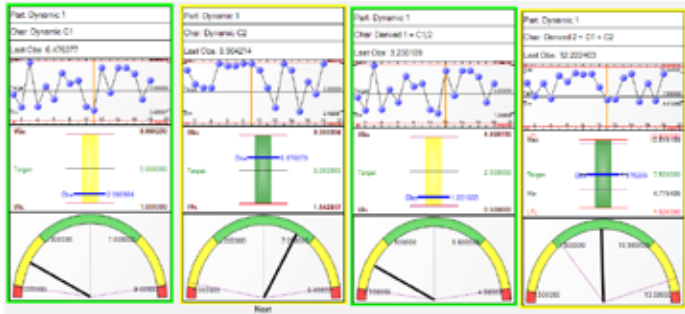
SMALL TOOL INSTRUMENTS
AND DATA MANAGEMENT



MeasurLink 9

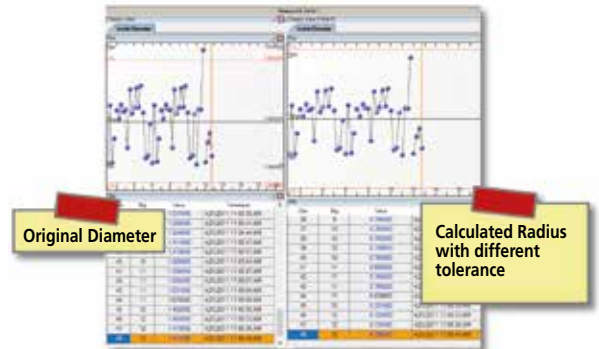
Below is a brief example of some of the new functions and features included in this newest release of MeasurLink, Mitutoyo's Real-Time SPC and Data Collection software. Please visit our website for a copy of our release notes that detail all the other new functions and features.

Real-Time Dynamic Gage



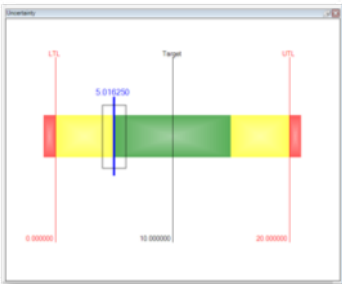
This function displays dynamic data from a data source at high sampling rates while providing a mechanism for discrete recording. Supports recording of Max/Min during capture and timed polling sampling. Two dynamic charts supported: Indicator bar and Meter chart

What-If Scenarios in Process Analyzer



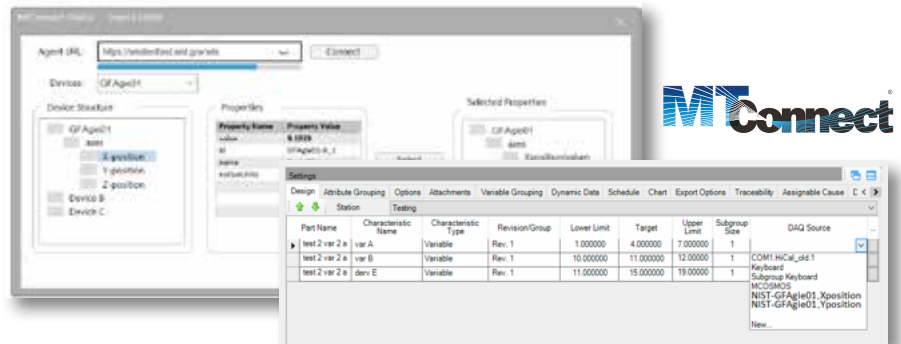
Run hypothetical scenarios in Process Analyzer. Scenarios include Tolerance changes, Data Tests and Derived Characteristics.

Real-Time Uncertainty Chart



Uncertainty Chart added to display band around collected feature. This provides users a visual representation of how the gage performance affects measurement.

Collect Data in Real-Time with MT Connect DAQ Source



Agent data streams can be configured as Device channels. Inspection Routines allow mapping of characteristics to MTConnect Agent device channels as DAQ sources. All Real-Time functionality supported.

Database Backup/Restore from MeasurLink Console



This supports functionality for customer DRBC (Disaster Recovery Business Continuity) or compliance initiatives without the need for the MSSQL Management Studio toolset.

Windows Active Directory Support



Integration supports Windows Users and Groups, AD Users get assigned MeasurLink and MCOSMOS rights and Single Sign On (SSO).

Additional New Functions and Features

- Copy/Paste Gage R&R Data
- Gage Management - Import Gage information from an external source
- Save Layouts in Process Analyzer
- Automatically identify characteristic during data collection based on incoming data and tolerancing
- Include Assignable Cause/Corrective Action in email alerts
- Traceability - create entry masks and validation
- Statistical Test for Data Randomness (used for confidence in process capability indices)
- Compare historical Calibrations in Gage Management
- CUSUM Chart

System Information

MeasurLink is a modular data management software system that enables collecting data from a wide range of Mitutoyo measuring tools and systems including Calipers, Indicators, Sensors, Vision and Coordinate Measuring Machines.

- **MeasurLink Real-Time Standard** allows data collection from each tool and instrument while allowing real-time display of statistical processing data such as control charts, histograms and process capability indices.
- **MeasurLink Real-Time Professional** additionally supports filter, Import Templates and DDE DAQ Sources.
- **MeasurLink Real-Time Professional 3D** additionally supports view of the workpiece using 3D CAD data. (HOOPS).
- **MeasurLink Process Analyzer** A powerful supervisory tool for viewing, analyzing and reporting on all data collected at any Real-Time station on the network. Additional charting options and management friendly reports provide insight on the manufacturing process.
- **MeasurLink Process Manager** enables centralized monitoring of information from all MeasurLink data collection terminals networked together on the shop floor.
- **MeasurLink Report Scheduler** automatically outputs reports created by Real-Time or Process Analyzer on a user defined schedule.
- **MeasurLink Gage Management** plans and implements a complete calibration schedule and incorporates a powerful retrieval function in addition to recording and managing the operational state of gages.
- **MeasurLink Gage R&R** is an evaluation and analysis software compliant with MSA required in ISO/TS 16949.
- **Workgroups and Site Licenses:** The MeasurLink suite is best acquired as a Workgroup or Site License. The package can be any combination of Real-Time, Process Analyzer, Process Manager, Report Scheduler, Gage R&R and/or Gage Management modules. All of the stations in the installation store their data in a SQL Database located on the user's network.
- **Floating License Upgrade:** Users who want to use MeasurLink in a terminal server environment or want to have a number of concurrent users should consider the Floating License upgrade option. This upgrade is available in packs of 5, 10, 15 and 30. This upgrade includes a licensing server, DeployLX version 5, that manages the number of seats available. Thin-Client hardware or traditional PCs can utilize this option.

Item	Part Number		
	New Purchase	Version Upgrade	Floating Upgrade
MeasurLink V9 Real-Time Standard Edition	64AAB606	64AAB606-U	N/A
MeasurLink V9 Real-Time Professional Edition	64AAB607	64AAB607-U	N/A
MeasurLink V9 Real-Time Professional 3D Edition	64AAB608	64AAB608-U	N/A
MeasurLink V9 Process Analyzer Professional Edition	64AAB609	64AAB609-U	N/A
MeasurLink V9 Process Manager Standard Edition	64AAB610	64AAB610-U	N/A
MeasurLink V9 Gage R&R Standard Edition	64AAB611	64AAB611-U	N/A
MeasurLink V9 Gage Management Standard Edition	64AAB612	64AAB612-U	N/A
MeasurLink V9 Report Scheduler Standard Edition	64AAB613	64AAB613-U	N/A
MeasurLink V9 Workgroup 5 License Package	64AAB618	64AAB618-U	64AAB618F
MeasurLink V9 Workgroup 10 License Package	64AAB617	64AAB617-U	64AAB617F
MeasurLink V9 Workgroup 15 License Package	64AAB615	64AAB615-U	64AAB615F
MeasurLink V9 Site License 30 License Package	64AAB614	64AAB614-U	64AAB614F
MeasurLink V9 Academic 20 License Package	64AAB619	64AAB619-U	N/A



Database Management System (DBMS) Requirements

- Microsoft® SQL Server 2014 Standard and Enterprise Editions
- Microsoft® SQL Server 2016 Standard and Enterprise Editions
- Microsoft® SQL Server 2017 Standard and Enterprise Editions

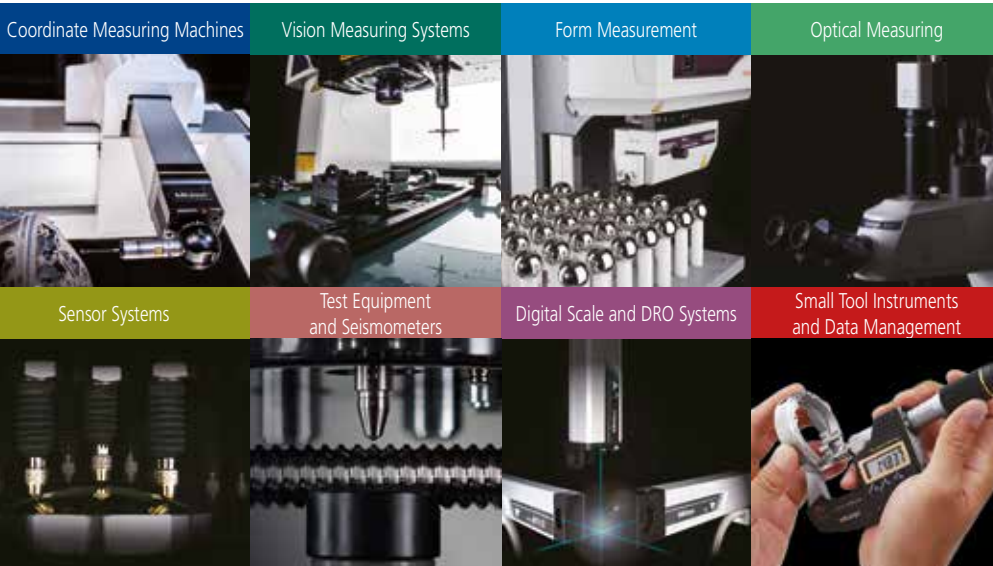
Operating System Requirements

- All Windows® 7 Versions
- All Windows® 8 Versions (except RT)
- All Windows® 10 Versions (except Mobile or IoT)
- Both 32-bit and 64-bit operating systems supported



Hardware Requirements

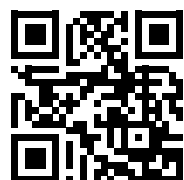
- 1 gigahertz (GHz) or faster 32-bit (x86) or 64-bit (x64) processor
- 4 gigabytes (GB) RAM 32-bit or 8 gigabytes (GB) RAM 64-bit
- 16 GB available hard disk space (32-bit) or 20 GB available hard disk space (64-bit)
- DirectX 9 graphics device with WDDM 1.0 or higher driver
- DVD-ROM drive (Optional)



**Whatever your challenges are,
Mitutoyo supports you from start to finish.**

Mitutoyo is not only a manufacturer of top quality measuring products but one that also offers qualified support for the lifetime of the equipment, backed up by comprehensive services that ensure your staff can make the very best use of the investment.

Apart from the basics of calibration and repair, Mitutoyo offers product and metrology training, as well as IT support for the sophisticated software used in modern measuring technology. We can also design, build, test and deliver bespoke measuring solutions and even, if deemed cost-effective, take your critical measurement challenges in-house on a sub-contract basis.



**Find additional product literature
and our product catalogue**

www.mitutoyo.eu

Note: Product illustrations are without obligation. Product descriptions, in particular any and all technical specifications, are only binding when explicitly agreed upon.
MITUTOYO and MiCAT are either registered trademarks or trademarks of Mitutoyo Corp. in Japan and/or other countries/regions. Other product, company and brand names mentioned herein are for identification purposes only and may be the trademarks of their respective holders.

Mitutoyo

Mitutoyo Europe GmbH

Borsigstraße 8-10
41469 Neuss

Tel. +49 (0) 2137-102-0
Fax +49 (0) 2137-102-351

info@mitutoyo.eu
www.mitutoyo.eu