

U-WAVEPAK-BW

Setup Manual

Read this Setup Manual thoroughly before using the application.

After reading, retain it close at hand for future reference.

Mitutoyo

Notice: Please make sure to confirm the following before installation

This program is created and distributed for free by Mitutoyo as part of its customer service.

Whether explicitly or implicitly, Mitutoyo cannot guarantee the quality and performance of this program.

Mitutoyo cannot accept liability for any damage arising from the use of this program (including damage, failure, other consequential damage, etc. of hardware, other programs and data), either directly or indirectly.

-Mitutoyo shall not be responsible for any result and related influence caused by the operation of this program and manual.

-All copyright for this program and manual belongs to Mitutoyo.

-No one shall be allowed to revise part or all of this program without permission.

-If this program is copied, reproduced or assigned to a third party, the entire material including this manual must be included in complete condition. Elimination or revision of this manual, and the copying, reproduction or assignment of part of this program is strictly prohibited.

Notice: About U-WAVE-TCB/U-WAVE-TMB and U-WAVEPAK-BW

-This application operates on Windows10. Please ensure to run it on a PC with Windows10 installed.

-This application can use the Bluetooth function that comes with the device. The terminal without Bluetooth function purchases commercial Bluetooth receiver, and please use it.

-This application and U-WAVE-TCB/U-WAVE-TMB do not guarantee the connection with all Bluetooth apparatuses.

※ This application has been confirmed to work with windows10 Pro.

Table of Contents

- 1. Installation2
- 2. Setting up the U-WAVE-TCB/U-WAVE-TMB2
 - 2.1. How to connect the U-WAVE-TCB/U-WAVE-TMB to the U-WAVEPAK-BW2
 - 2.2. How to disconnect the U-WAVE-TCB/U-WAVE-TMB from the U-WAVEPAK-BW9
- 3. Inputting measurement values..... 10
- 4. Measurement modes..... 11
- 5. Editing the settings..... 12
 - 5.1. Modifying the settings..... 12
 - 5.2. Deleting the settings..... 15
- 6. Setting the connection to a higher-level application software (MeasurLink, ITPAK, etc.) 19
- 7. How to uninstall U-WAVEPAK BW 20

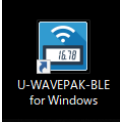
1. Installation

- (1) Double-click on [uwavepakble_setup.exe]
- (2) Complete the installation following the installation guidance displayed on the window.

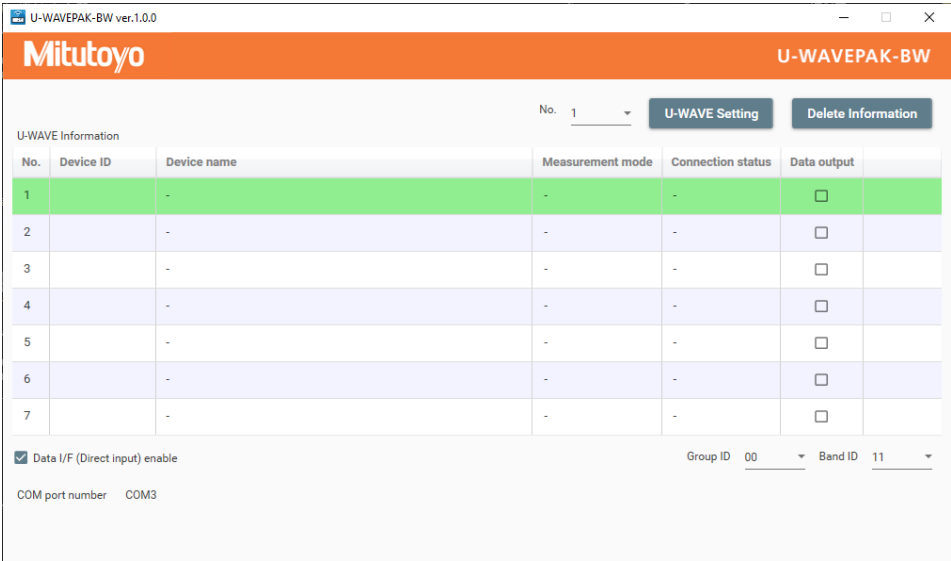
2. Setting up the U-WAVE-TCB/U-WAVE-TMB

2.1. How to connect the U-WAVE-TCB/U-WAVE-TMB to the U-WAVEPAK-BW

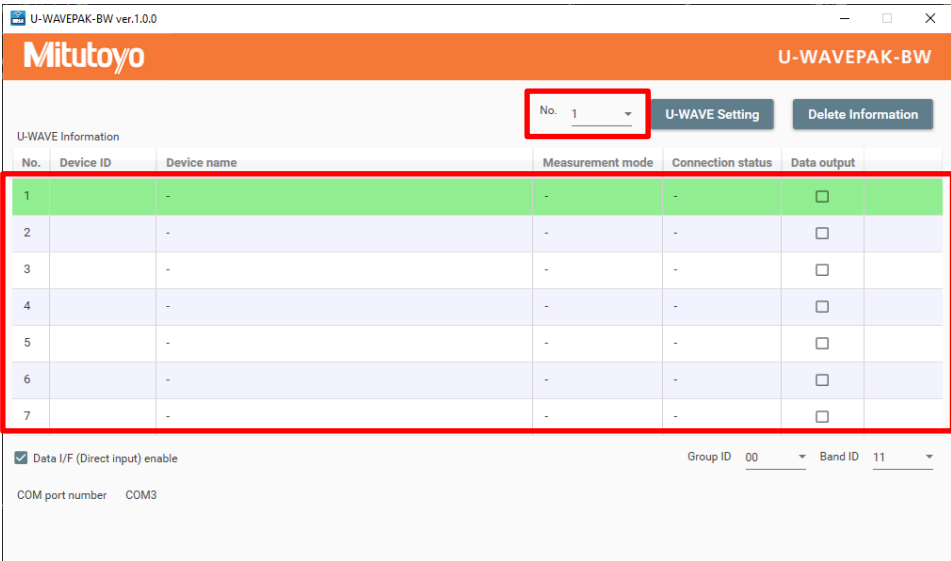
- (1) Double-click on [U-WAVEPAK-BW] to run the application, U-WAVEPAK-BW.



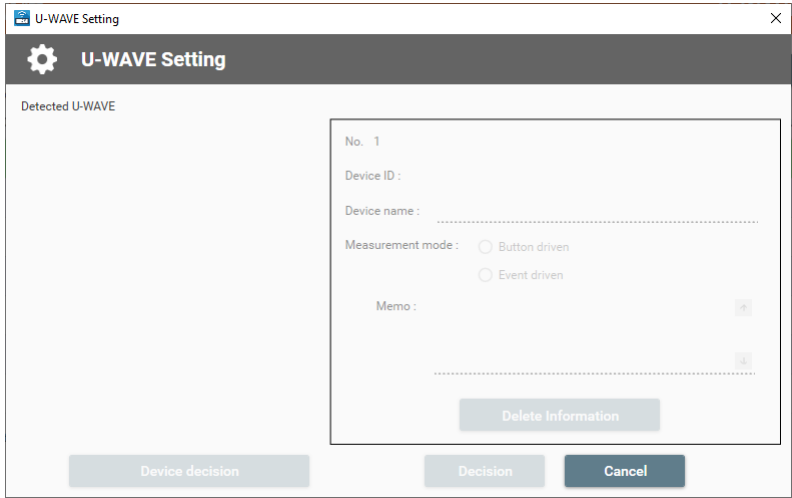
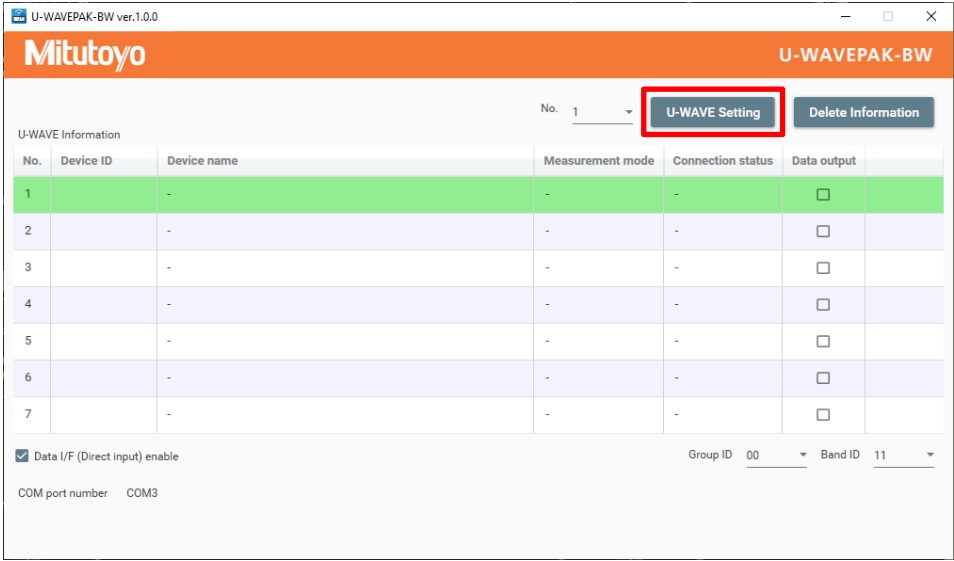
The following window will be displayed, signaling the completion of the starting up of the application.



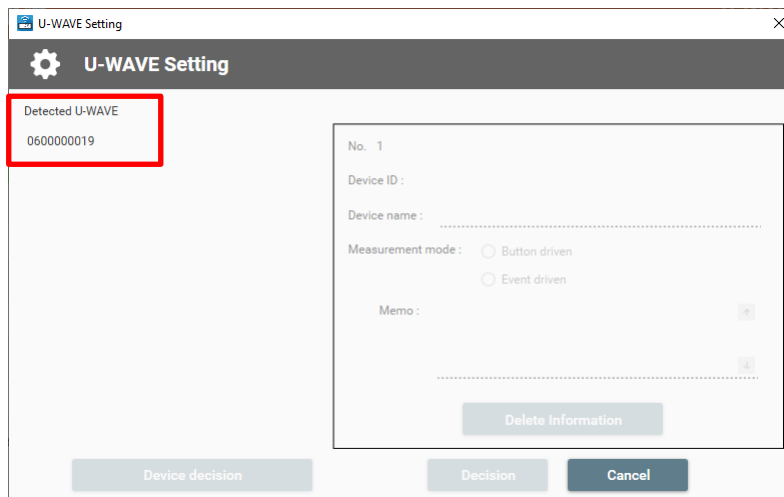
- (2) The maximum number of units of U-WAVE-TCB/U-WAVE-TMB to be set up is seven. To set up a U-WAVE-TCB/U-WAVE-TMB, click on a number in the table [U-WAVE Information]. You can also select a number from the drop-down list at the top-right of the window.



(3) Click on the [U-WAVE Setting] button to open the setting window.



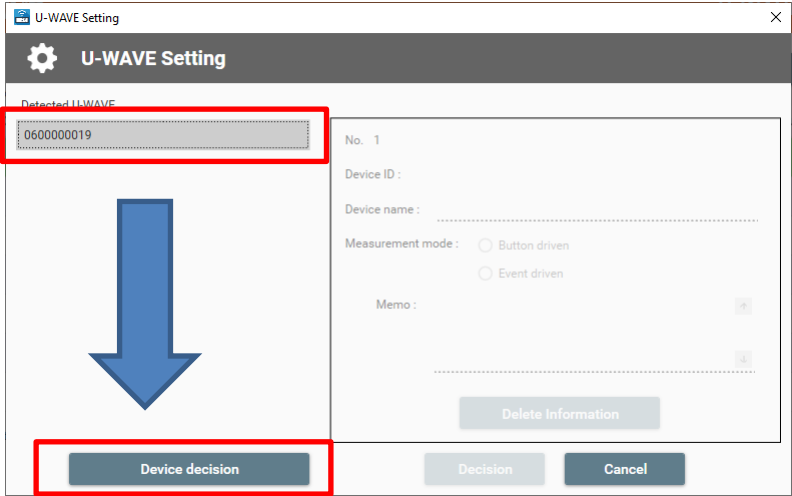
(4) Press the “Data” button (orange button) attached to the connection unit of the U-WAVE-TCB/U-WAVE-TMB. The LED of the U-WAVE-TCB/U-WAVE-TMB will flash in orange. After the U-WAVE-TCB/U-WAVE-TMB has been detected by the U-WAVEPAK-BW, its ID number will be displayed in the item [Detected U-WAVE].



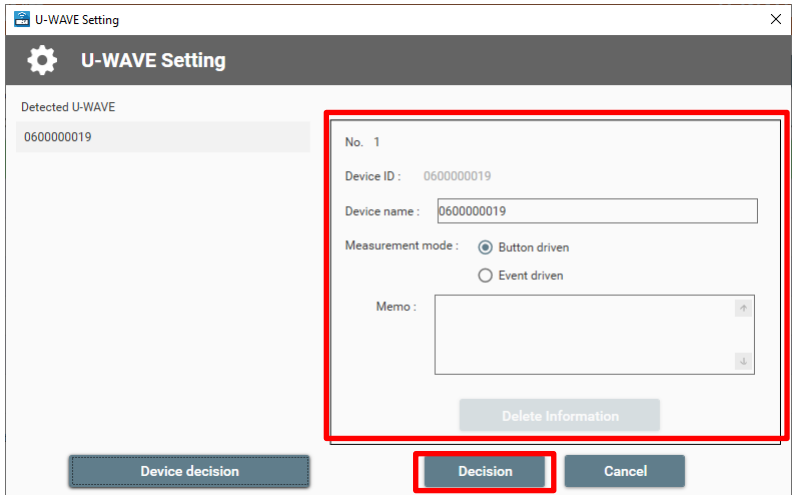
Tips:

- The detected ID number can be found on the label stuck on the body of a U-WAVE-TCB/U-WAVE-TMB.
- If the U-WAVE-TCB/U-WAVE-TMB cannot be detected, press the “DATA” button again. There will be cases where it cannot be detected depending on the timing at which you press the button. If it is not still detected, turn off the Bluetooth communication of the OS, turn on the Bluetooth communication again, and try detection.
- When the [U-WAVE Setting] window is open, the red LED of the U-WAVE-TCB/U-WAVE-TMB will either start flashing, or its buzzer will start beeping, regardless of whether the connection is successful or not.
- If a U-WAVE-TCB/U-WAVE-TMB has already been set up, its ID number will not be detected.
- If the U-WAVE-TCB/U-WAVE-TMB is connected to applications other than this application, its ID number will not be detected.

(5) Click on the detected ID number, and then click the [Device decision] button.



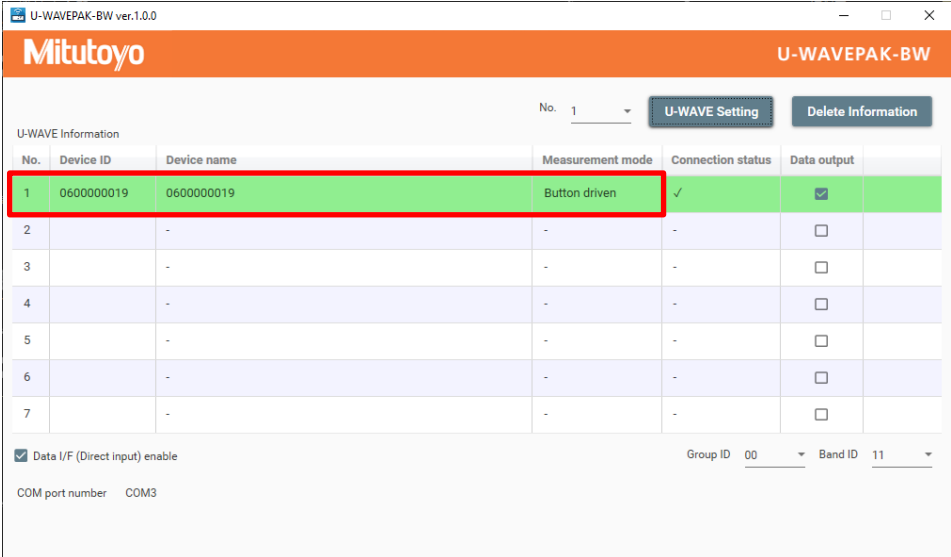
(6) Confirm that the ID number has shown up in the item [Device ID] at the right of the window, and then click on the [Confirm] button.



- Tips:**
- A device name can be changed voluntarily.
 - Any message can be stored in the item [Memo].

(7) Make sure that the information for the U-WAVE-TCB/U-WAVE-TMB has shown up in the row of the number that you wish to set it to, and then press the "DATA" button (orange button) on the connection unit.

A successful connection will be indicated with the appearance of the mark "✓" in the [Connection] box.

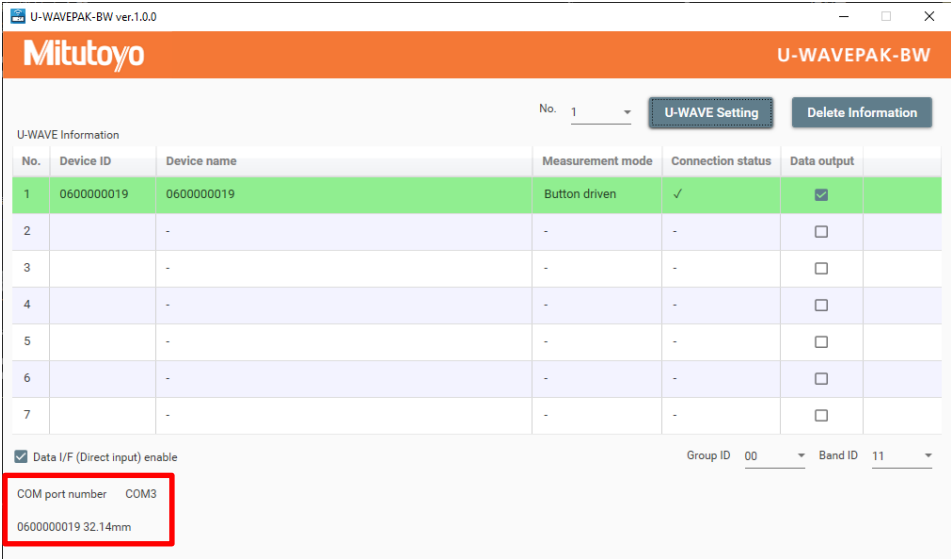


Tips:

- When the connection fails, press the "DATA" button again. There will be cases where the U-WAVE-TCB/U-WAVE-TMB cannot be detected depending on the timing you press the button.

(8) Press the "DATA" button on the connection unit again, and check if a measurement value can be transmitted.

If the value is displayed at the bottom-left of the window correctly, the setting up has been completed.

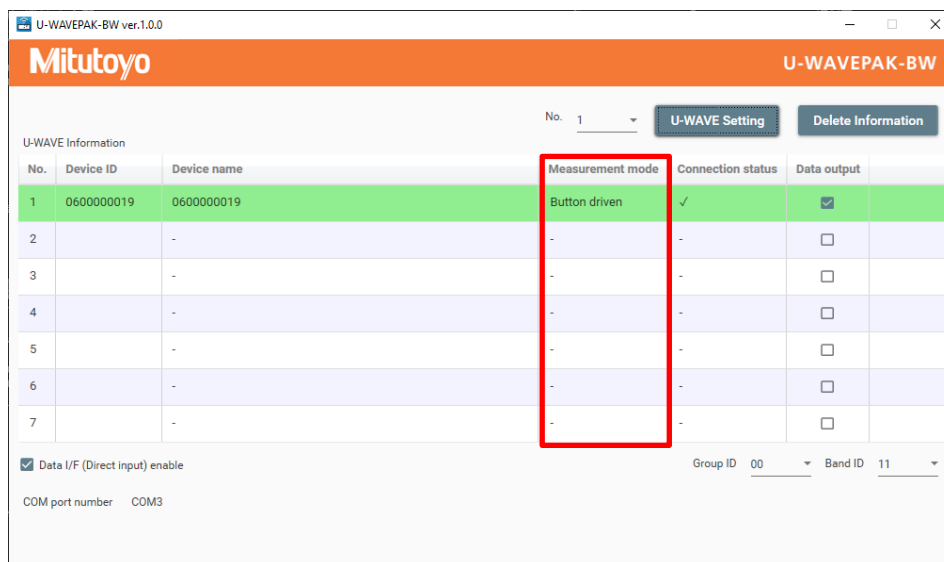


Tips:

In the period immediately after setting up the U-WAVE-TCB/U-WAVE-TMB, there will be cases where measurement values cannot be transmitted even if the connection is successful. If such a case occurs, please send the measurement values again after a gap of a few seconds.

2.2. How to disconnect the U-WAVE-TCB/U-WAVE-TMB from the U-WAVEPAK-BW

When you wish to disconnect the U-WAVE-TCB/U-WAVE-TMB from this application, double-click on the mark “✓” in the appropriate box in the “Connection” column. In order to establish a connection again, press the “DARA” button on the connection unit.



Tips:

If the mark “✓” in the “Connection” column does not disappear even a few seconds after double-clicking it, please double-click it again.

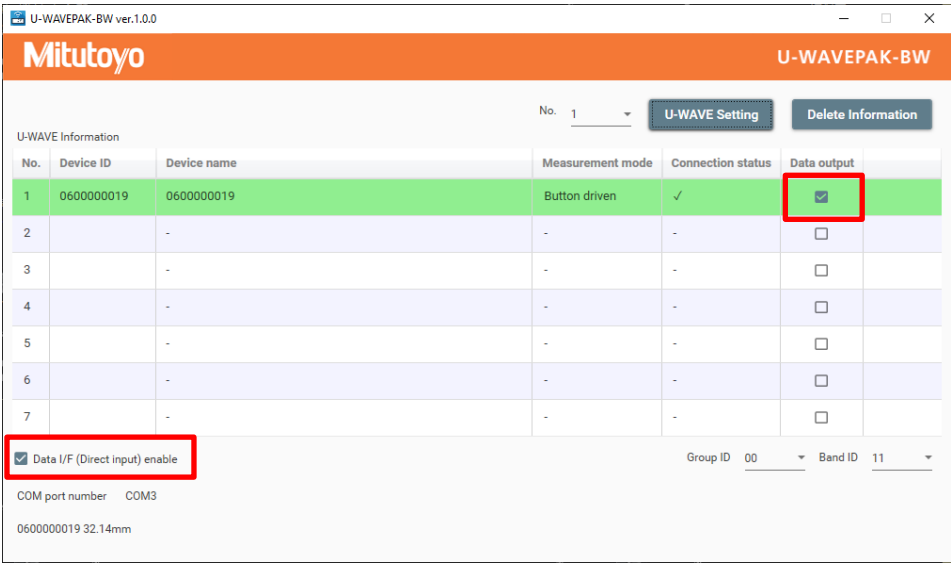
Note:

- With the U-WAVE-TCB/U-WAVE-TMB connected via Bluetooth, the battery power will be consumed even if you are not using it. In the case that you will not use it for a long time, please store it with the Bluetooth connection disconnected.
- Measurement data is not sent when communication is reconnected. When you are reconnected, you confirm that measurement data is input into a terminal by all means, and please use it.

3. Inputting measurement values

(1) In order to transfer measurement values received from the U-WAVE-TCB/U-WAVE-TMB to an Excel spreadsheet and the like, put the mark “√” in the “Data I/F (Direct input) enable” box.

(2) Measurement values received from the U-WAVE-TCB/U-WAVE-TMB can be transferred to an Excel spreadsheet and the like, only when the corresponding “Data out” box has been checked.



(3) When you wish to input measurement values in an Excel spreadsheet, activate cells in the spread sheet, and then send the measurement values from the U-WAVE-TCB/U-WAVE-TMB with the keyboard input mode enabled.

Tips:

- “Data I/F (Direct input) enable” and “Data out” is enabled in the initial settings.
- Received measurement values can be transferred to an Excel spreadsheet only with the keyboard input mode enabled.
- If the measurement mode is set to [button-driven], measurement values can be sent by pressing the [DATA] button of the connection unit.
- If the measurement mode is set to [event-driven], this application outputs a measurement value in response to a data request from higher-level application software.

4. Measurement modes

-In the case of the [button-driven] mode,

If you press the [DATA] button on the connection unit once, the U-WAVE-TCB/U-WAVE-TMB will then send a measurement value once.

-In the case of the [event-driven] mode,

The U-WAVE-TCB/U-WAVE-TMB automatically sends a measurement value every 0.5 seconds, when the measurement value of the measurement tool (connected to the U-WAVE-TCB/U-WAVE-TMB) changes.

This application keeps the latest received measurement value and sends the latest measurement value in response to a request from higher-level application software and the like.

Tips:

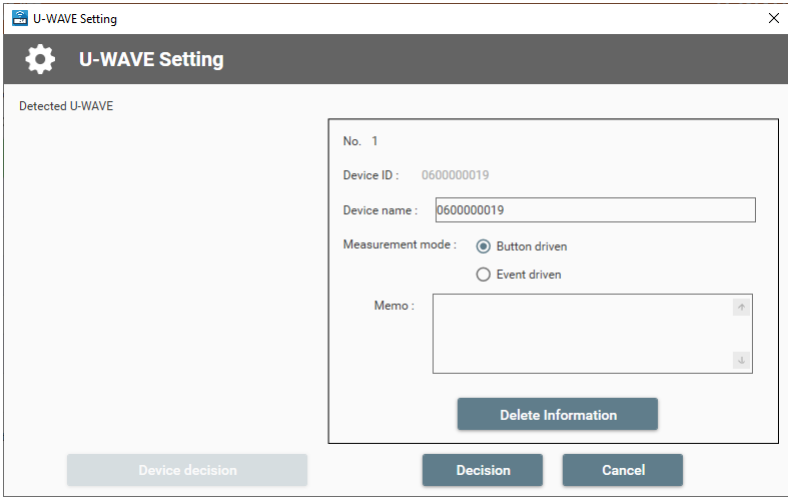
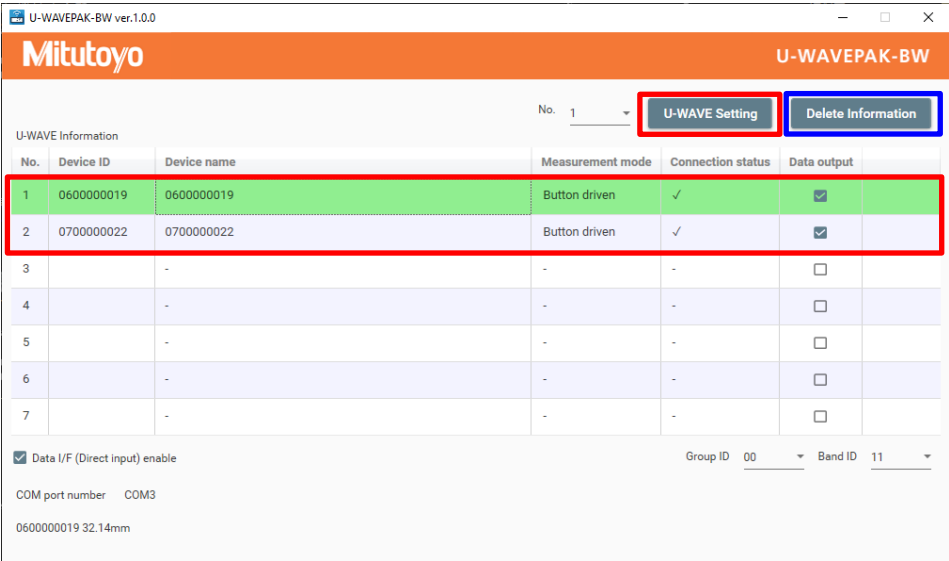
In the [event-driven] mode, the battery power drains faster than in the [button-driven] mode because more frequent communication occurs.

5. Editing the settings

5.1. Modifying the settings

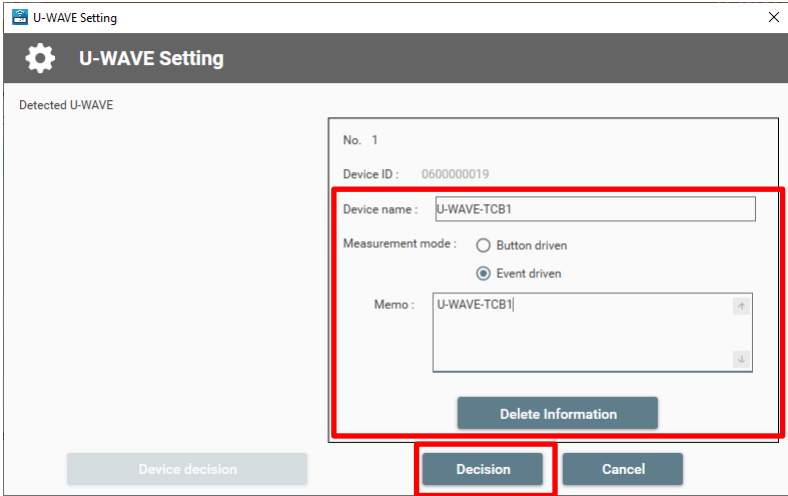
If you wish to change the settings information of a U-WAVE-TCB/U-WAVE-TMB set up in this application, please follow the procedure below.

(1) Double-click on the corresponding number for the information to which you wish to make changes in the table [U-WAVE Information] or select the number from the drop-down list at the top-right of the window. Then click on the [U-WAVE Setting] button.



(2) Change the settings information.

When having finished the change, click on the [Decision] button.

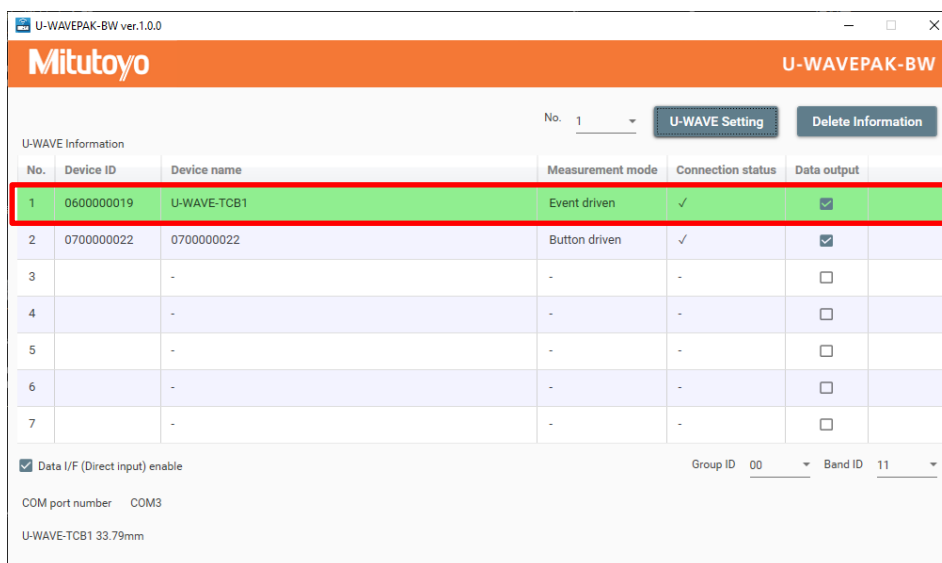


Items to be changed	Contents
Device name	Change the device name.
Measurement mode	Select either the [button-driven] mode or the [event-driven] mode.
Memo	Change the contents written here
Delete information	Delete the information of the selected U-WAVE-TCB/U-WAVE-TMB

Tips:

There are cases where units of U-WAVE-TCB/U-WAVE-TMB which are not currently registered can be detected during the changing of information.

(3) Confirm that the changed settings information is successfully reflected in the [U-WAVE Information] window.



Tips:

-If you have changed the measurement mode, please follow the instructions below:

From the [button-driven] mode to the [event-driven] mode: Change the measurement value in the measuring tool connected to the U-WAVE-TCB/U-WAVE-TMB.

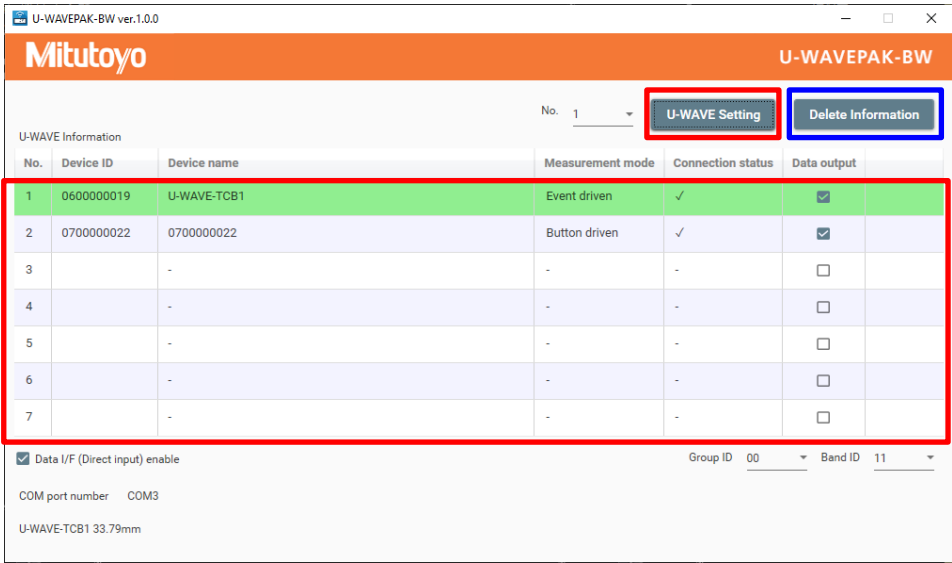
From the [event-driven] mode to the [button-driven] mode: Press the [DATA] button on the connection unit of the U-WAVE-TCB/U-WAVE-TMB.

5.2. Deleting the settings

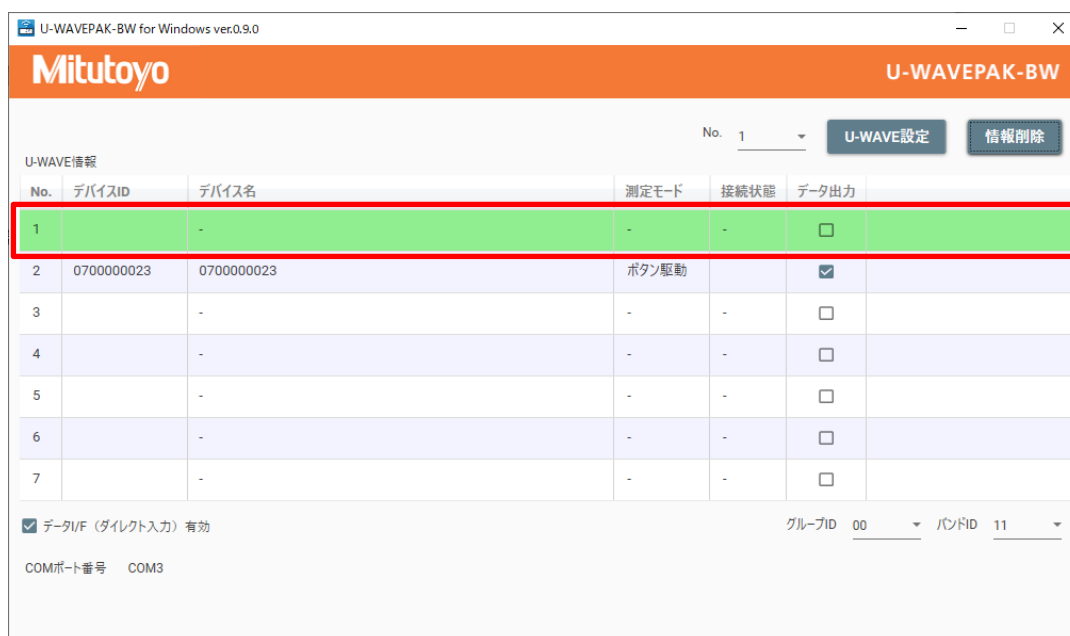
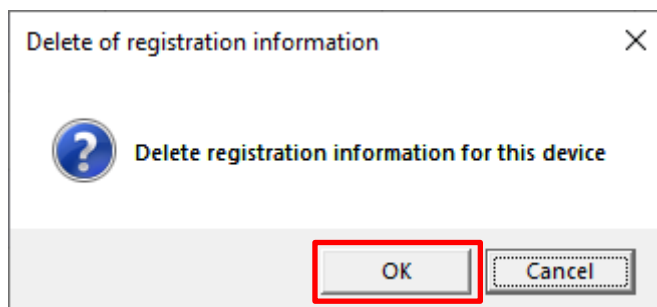
If you wish to delete the settings information of the U-WAVE-TCB/U-WAVE-TMB set up in this application, follow the procedure below.

-Delete the settings information from the [U-WAVE Information] window

(1) Double-click on the corresponding number for the information you wish to delete in the table [U-WAVE Information] or select the number from the drop-down list at the top-right of the window. Then click on the [Delete Information] button

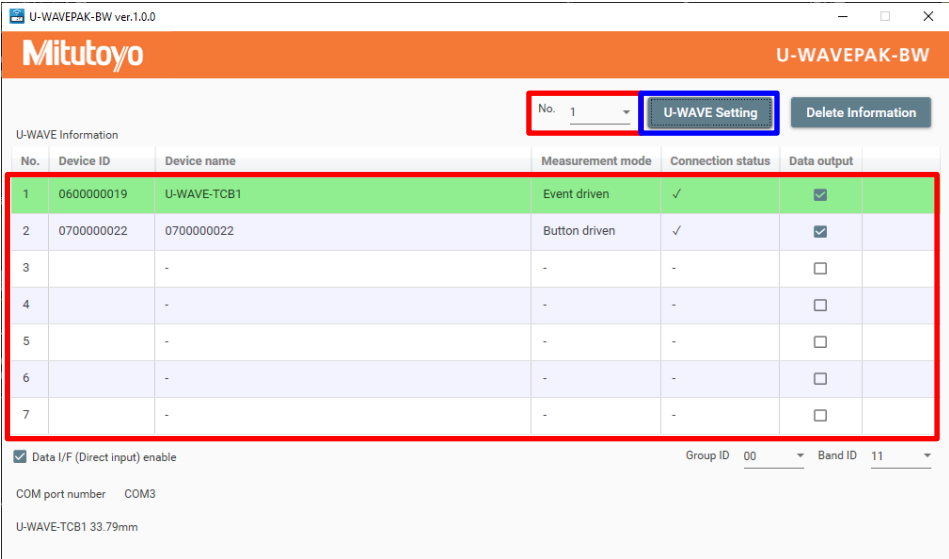


(2) After the dialog [Delete of registration information] has shown up, click on the [OK] button to delete the settings information.

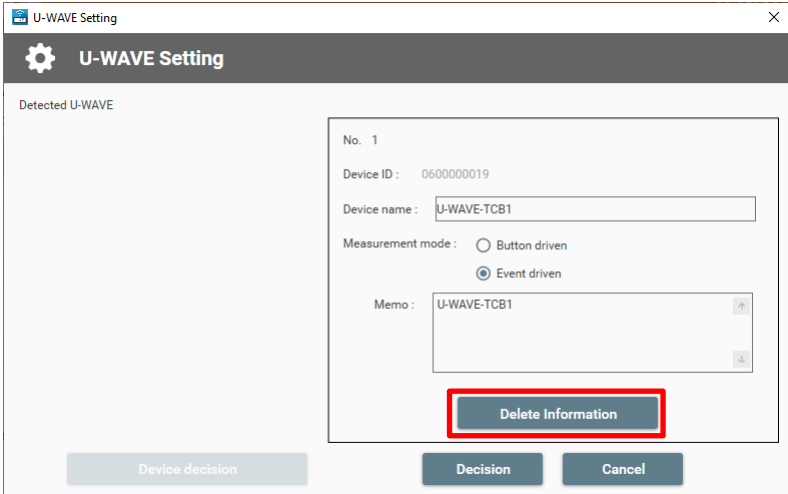


-Delete the settings information from the [U-WAVE Setting] window

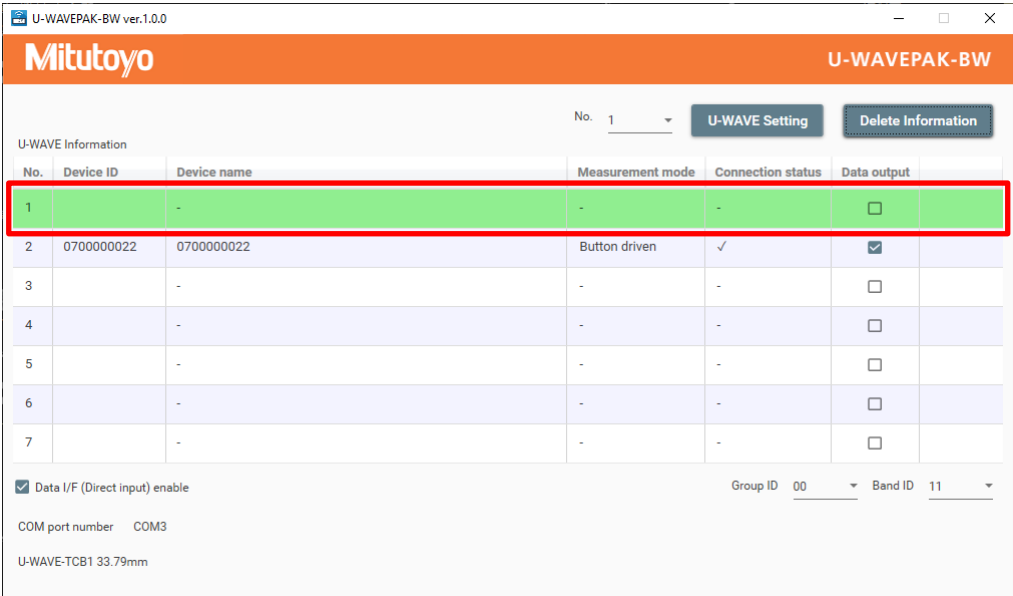
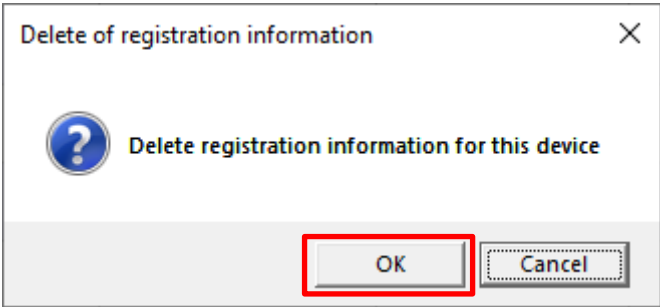
(1) Double-click on the corresponding number for the information you wish to delete in the table [U-WAVE Information] or select the number from the drop-down list at the top-right of the window. Then click on the [U-WAVE Setting] button



(2) Click on the [Delete Information] button in the [U-WAVE Setting] window.



(3) After the dialog [Delete of registration information] has shown up, click on the [OK] button to delete the settings information.



6. Setting the connection to a higher-level application software (MeasurLink, ITPAK, etc.)

To use this application with higher-level application software, please change the following numbers and IDs to be the same between this application and the higher-level application software.

Port number: Match the Port number of the higher-level application software to [COM port number] displayed at the bottom-left of this application's window.

Channel ID: Match the Channel ID of the higher-level application software to the number equal to the number in the table [U-WAVE Information] minus 1.

*Example: In the case that the number in the table [U-WAVE Information] is 1, the channel number will be 00 (Channel ID = 00)

Group ID: Change the Group ID displayed at the bottom-right of the window of this application to the same value as that of the higher-level application software.

Band ID: Change the Band ID displayed at the bottom-right of the window of this application to the same value as that of the higher-level application software.

The screenshot shows the 'U-WAVEPAK-BW ver.1.0.0' application window. The title bar includes the Mitutoyo logo and the text 'U-WAVEPAK-BW'. Below the title bar, there is a 'U-WAVE Information' section with a table. The table has columns for 'No.', 'Device ID', 'Device name', 'Measurement mode', 'Connection status', and 'Data output'. The first row is highlighted in green and has the number '1' in the 'No.' column, which is circled in red. Below the table, there are several configuration fields: a checked checkbox for 'Data I/F (Direct input) enable', a 'COM port number' field set to 'COM3' (circled in red), and 'Group ID' and 'Band ID' dropdown menus set to '00' and '11' respectively (both circled in red). At the bottom, the device ID '0600000019' and a measurement value '32.14mm' are displayed.

No.	Device ID	Device name	Measurement mode	Connection status	Data output
1	0600000019	0600000019	Button driven	✓	<input checked="" type="checkbox"/>
2	-	-	-	-	<input type="checkbox"/>
3	-	-	-	-	<input type="checkbox"/>
4	-	-	-	-	<input type="checkbox"/>
5	-	-	-	-	<input type="checkbox"/>
6	-	-	-	-	<input type="checkbox"/>
7	-	-	-	-	<input type="checkbox"/>

COM port number: COM3

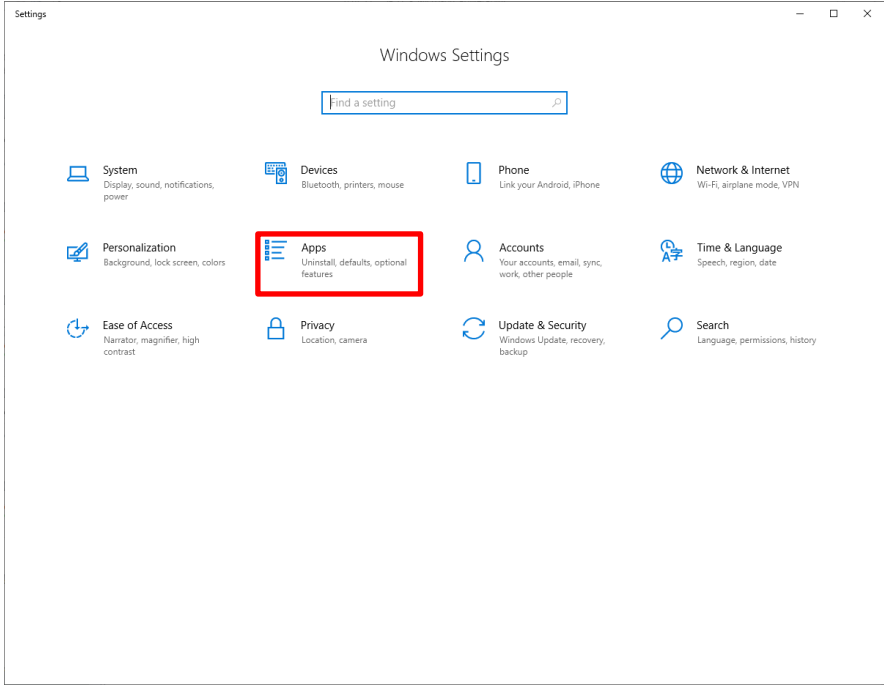
Group ID: 00 Band ID: 11

0600000019 32.14mm

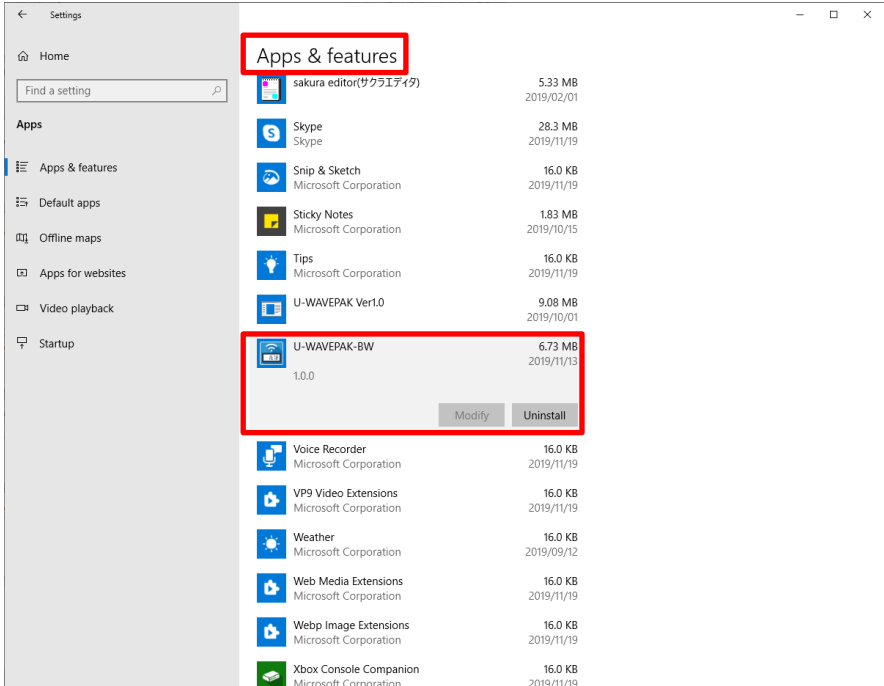
7. How to uninstall U-WAVEPAK-BW

If you wish to uninstall the U-WAVEPAK-BW set up in this PC, follow the procedure below.

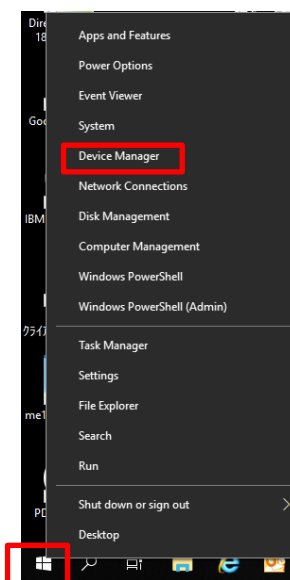
- ① Please select this 『Windows Settings』⇒『Apps』.



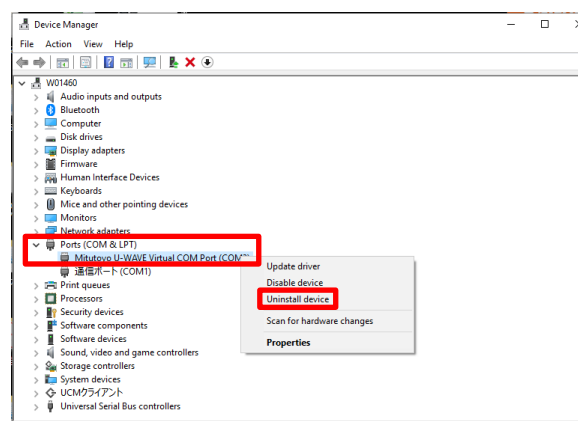
- ② Please uninstall 『U-WAVEPAK-BW』 in the 『Apps & features』.



- ③ Click on the windows mark at the bottom left of the screen.
Select the 『Device Manager』 in the item.



- ④ Right-click 『Mitutoyo U-WAVE Virtual COM Port』 in the 『Ports(COM & LPT)』.
Select the 『Uninstall device』 and delete it.



Europe

Mitutoyo Europe GmbH

Borsigstrasse 8-10, 41469 Neuss, GERMANY
TEL: 49(0)2137 102-0 FAX: 49(0)2137 102-351

Mitutoyo CTL Germany GmbH

Von-Gunzert-Strasse 17, 78727 Oberndorf, GERMANY
TEL: 49(0)7423 8776-0 FAX: 49(0)7423 8776-99

KOMEG Industrielle Messtechnik GmbH

Zum Wasserwerk 3, 66333 Völklingen, GERMANY
TEL: 49(0)6898 91110 FAX: 49(0)6898 9111100

Germany

Mitutoyo Deutschland GmbH

Borsigstrasse 8-10, 41469 Neuss, GERMANY
TEL: 49(0)2137 102-0 FAX: 49(0)2137 86 85

M3 Solution Center Hamburg

Tempowerkring 9 im HIT-Technologiepark 21079 Hamburg,
GERMANY
TEL: 49(0)40 791894-0 FAX: 49(0)40 791894-50

M3 Solution Center Berlin

Carl-Scheele-Straße 16, 12489 Berlin, GERMANY
TEL: 49(0)30 2611 267

M3 Solution Center Eisenach

Heinrich-Ehrhardt-Platz 1, 99817 Eisenach, GERMANY
TEL: 49(0)3691 88909-0 FAX: 49(0)3691 88909-9

M3 Solution Center Ingolstadt

Marie-Curie-Strasse 1a, 85055 Ingolstadt, GERMANY
TEL: 49(0)841 954920 FAX: 49(0)841 9549250

M3 Solution Center Leonberg

Steinbeisstrasse 2, 71229 Leonberg, GERMANY
TEL: 49(0)7152 6080-0 FAX: 49(0)7152 608060

Mitutoyo-Messgeräte Leonberg GmbH

Heidenheimer Strasse 14, 71229 Leonberg, GERMANY
TEL: 49(0)7152 9237-0 FAX: 49(0)7152 9237-29

U.K.

Mitutoyo (UK) Ltd.

Joule Road, West Point Business Park, Andover, Hampshire
SP10 3UX, UNITED KINGDOM

TEL: 44(0)1264 353 123 FAX: 44(0)1264 354883

M3 Solution Center Coventry

Unit6, Banner Park, Wickmans Drive, Coventry,
Warwickshire CV4 9XA, UNITED KINGDOM

TEL: 44(0)2476 426300 FAX: 44(0)2476 426339

M3 Solution Center Halifax

Lowfields Business Park, Navigation Close, Elland, West
Yorkshire HX5 9HB, UNITED KINGDOM

TEL: 44(0)1422 375566 FAX: 44(0)1422 328025

M3 Solution Center East Kilbride

The Baird Building, Rankine Avenue, Scottish Enterprise
Technology Park, East Killbride G75 0QF, UNITED
KINGDOM

TEL: 44(0)1355 581170 FAX: 44(0)1355 581171

France

Mitutoyo France

Paris Nord 2-123 rue de la Belle Etoile, BP 59267 ROISSY EN
FRANCE 95957 ROISSY CDG CEDEX, FRANCE

TEL: 33(0)149 38 35 00

M3 Solution Center LYON

Parc Mail 523, cours du 3^{ème} millénaire, 69791 Saint-Priest,
FRANCE

TEL: 33(0)149 38 35 70

M3 Solution Center STRASBOURG

Parc de la porte Sud, Rue du pont du péage, 67118
Geispolsheim, FRANCE

TEL: 33(0)149 38 35 80

M3 Solution Center CLUSES

Espace Scionzier 480 Avenue des Lacs, 74950 Scionzier,
FRANCE

TEL: 33(0)1 49 38 35 90

M3 Solution Center TOULOUSE

Aeroparc Saint Martin Cellule B08
ZAC de Saint Martin du Touch 12 rue de Caulet
31300 Toulouse, FRANCE

TEL: 33(0)1 49 38 42 90

M3 Solution Center RENNES

ZAC Mivoie
Le Vallon
35230 Noyal-Châtillon sur Seiche, FRANCE

TEL: 33(0)1 49 38 42 10

Italy

MITUTOYO ITALIANA S.r.l.

Corso Europa, 7 - 20020 Lainate (MI), ITALY
TEL: 39 02 935781 FAX: 39 02 9373290 • 93578255

M3 Solution Center BOLOGNA

Via dei Carpini1/A - 40011 Anzola Emilia (BO), ITALY
TEL: 39 02 93578215 FAX: 39 02 93578255

M3 Solution Center CHIETI

Contrada Santa Calcagna - 66020 Rocca S. Giovanni (CH),
ITALY

TEL: 39 02 93578280 FAX: 39 02 93578255

M3 Solution Center PADOVA

Via G. Galilei 21/F - 35035 Mestrino (PD), ITALY
TEL: 39 02 93578268 FAX: 39 02 93578255

Belgium / Netherlands

Mitutoyo BeNeLux

Mitutoyo Belgium N.V.

Hogenakkerhoekstraat 8, 9150 Kruibeke, BELGIUM
TEL: 32(0)3-2540444 FAX: 32 (0)3-2540445

Mitutoyo Nederland B.V.

Wiltonstraat 25, 3905 KW Veenendaal,

SERVICE NETWORK

As of Jan 2019

THE NETHERLANDS
TEL: 31(0)318-534911

Sweden

Mitutoyo Scandinavia AB

Släntvägen 6, 194 61 Upplands Väsby, SWEDEN
TEL: 46(0)8 594 109 50 FAX: 46(0)8 590 924 10

M3 Solution Center Alingsås

Ängsvaktaregatan 3A, 441 38 Alingsås, SWEDEN
TEL: 46(0)8 594 109 50 FAX: 46(0)322 63 31 62

M3 Solution Center Värnamo

Storgatsbacken 1, 331 30 Värnamo, SWEDEN
TEL: 46(0)8 594 109 50 FAX: 46(0)370 463 34

Switzerland

Mitutoyo (Schweiz) AG

Steinackerstrasse 35, 8902 Urdorf, SWITZERLAND
TEL: 41(0)447361150 FAX: 41(0)447361151

Mitutoyo (Suisse) SA

Rue Galilée 4, 1400 Yverdon-les Bains, SWITZERLAND
TEL: 41(0)244259422 FAX: 41(0)447361151

Poland

Mitutoyo Polska Sp.z o.o.

Ul.Graniczna 8A, 54-610 Wroclaw, POLAND
TEL: 48(0)71354 83 50 FAX: 48(0)71354 83 55

Czech Republic

Mitutoyo Česko s.r.o.

Dubská 1626, 415 01 Teplice, CZECH REPUBLIC
TEL: 420 417-514-011 FAX: 420 417-579-867

Mitutoyo Česko s.r.o. M3 Solution Center Ivančice

Ke Karlovu 62/10, 664 91 Ivančice, CZECH REPUBLIC
TEL: 420 417-514-011 FAX: 420 417-579-867

Mitutoyo Česko s.r.o. M3 Solution Center Ostrava Mošnov

Mošnov 314, 742 51 Mošnov, CZECH REPUBLIC
TEL: 420 417-514-050 FAX: 420 417-579-867

Mitutoyo Česko s.r.o. Slovakia Branch

Hviezdoslavova 124, 017 01 Povážská Bystrica, SLOVAKIA
TEL: 421 948-595-590

Hungary

Mitutoyo Hungária Kft.

Záhony utca 7, D-épület / fsz, 1031 Budapest, HUNGARY
TEL: 36(0)1 2141447 FAX: 36(0)1 2141448

Romania

Mitutoyo Romania SRL

1A Drumul Garii Odai Street, showroom, Ground Floor,
075100 OTOPENI-ILFOV, ROMANIA
TEL: 40(0)311012088 FAX: 40(0)311012089

Showroom in Brasov

Strada Ionescu Crum Nr.1, Brasov Business Park Turnul 1,
Mezanin, 500446 Brasov-Judetul Brasov, ROMANIA
TEL/FAX: 40(0)371020017

Russian Federation

Mitutoyo RUS LLC

13 Sharikopodshipnikovskaya, bld.2, 115088 Moscow,
RUSSIAN FEDERATION
TEL: 7 495 7450 752

Finland

Mitutoyo Scandinavia AB Finnish Branch

Viherkittäjä 2A, 33960, Pirkkala, FINLAND
TEL: 358(0)40 355 8498

Austria

Mitutoyo Austria GmbH

Johann Roithner Straße 131 A-4050 Traun, AUSTRIA
TEL: 43(0)7229 23850 FAX: 43(0)7229 23850-90

Götzis Regional Showroom

Lasten Straße 48A 6840, AUSTRIA

Singapore

Mitutoyo Asia Pacific Pte. Ltd.

Head office / M3 Solution Center

24 Kallang Avenue, Mitutoyo Building, SINGAPORE 339415
TEL: (65)62942211 FAX: (65)62996666

Malaysia

Mitutoyo (Malaysia) Sdn. Bhd.

Kuala Lumpur Head Office / M3 Solution Center

Mah Sing Integrated Industrial Park, 4, Jalan Utarid U5/14,
Section U5, 40150 Shah Alam, Selangor, MALAYSIA
TEL: (60)3-78459318 FAX: (60)3-78459346

Penang Branch office / M3 Solution Center

No.30, Persiaran Mahsuri 1/2, Sunway Tunas, 11900 Bayan
Lepas, Penang, MALAYSIA
TEL: (60)4-6411998 FAX: (60)4-6412998

Johor Branch office / M3 Solution Center

No. 70, Jalan Molek 1/28, Taman Molek, 81100 Johor Bahru,
Johor, MALAYSIA
TEL: (60)7-3521626 FAX: (60)7-3521628

Thailand

Mitutoyo(Thailand)Co., Ltd.

Bangkok Head Office / M3 Solution Center

76/3-5, Chaengwattana Road, Kwaeng Anusaowaree, Khet
Bangkaen, Bangkok 10220, THAILAND
TEL: (66)2-080-3500 FAX: (66)2-521-6136

Chonburi Branch / M3 Solution Center

7/1, Moo 3, Tambon Bowin, Amphur Sriracha, Chonburi
20230, THAILAND

SERVICE NETWORK

As of Jan 2019

TEL: (66)2-080-3563 FAX: (66)3-834-5788

Amata Nakorn Branch / M3 Solution Center

700/199, Moo 1, Tambon Bankao, Amphur Phanthong,
Chonburi 20160, THAILAND

TEL: (66)2-080-3565 FAX: (66)3-846-8978

Indonesia

PT. Mitutoyo Indonesia

Head Office / M3 Solution Center

Jalan Sriwijaya No.26 Desa cibatu Kec. Cikarang Selatan Kab.
Bekasi 17530, INDONESIA

TEL: (62)21-2962 8600 FAX: (62)21-2962 8604

Vietnam

Mitutoyo Vietnam Co., Ltd

Hanoi Head Office / M3 Solution Center

No. 07-TT4, My Dinh - Me Tri Urban Zone, My Dinh 1 Ward,
Nam Tu Liem District, Hanoi, VIETNAM

TEL: (84)24-3768-8963 FAX: (84)24-3768-8960

Ho Chi Minh City Branch Office / M3 Solution Center

123 Dien Bien Phu Street, Ward 15, Binh Thanh District,
Ho Chi Minh City, VIETNAM

TEL: (84)28-3840-3489 FAX: (84)28-3840-3498

Mitutoyo Philippines, Inc.

Head Office/ M3 Solution Center

Unit 2103, Bldg 2 GMV Building 2, 107 North Main Avenue,
Laguna Technopark, Binan, Laguna 4024, Philippines

TEL: (63)49 544 0272 FAX: (63)49 544 0272

India

Mitutoyo South Asia Pvt. Ltd.

Head Office / M3 Solution Center

C-122, Okhla Industrial Area, Phase-I, New Delhi-110 020,
INDIA

TEL: 91(11)2637-2090 FAX: 91(11)2637-2636

MSA Gurgaon technical center

Plot No. 65, Phase-IV, Udyog Vihar, Gurgaon – 122016

TEL: 91(0124) – 2340294

Mumbai Region Head office

303, Sentinel Hiranandani Business Park Powai,
Mumbai-400 076, INDIA

TEL: 91(22)2570-0684, 837, 839 FAX: 91(22)2570-0685

Pune Office / M3 Solution Center

G2/G3, Pride Kumar Senate, F.P. No. 402 Off. Senapati Bapat
Road, Pune-411 016, INDIA

TEL: 91(20)6603-3643, 45, 46 FAX: 91(20)6603-3644

Bengaluru Region Head office / M3 Solution Center

No. 5, 100 Ft. Road, 17th Main, Koramangala, 4th Block,
Bengaluru-560 034, INDIA

TEL: 91(80)2563-0946, 47, 48 FAX: 91(80)2563-0949

Chennai Office / M3 Solution Center

No. 624, Anna Salai Teynampet, Chennai-600 018, INDIA

TEL: 91(44)2432-8823, 24, 27, 28 FAX: 91(44)2432-8825

Kolkata Office

Unit No. 1208, Om Tower, 32, J.L. Nehru Road, Kolkata-700
071, INDIA

TEL: 91 33-22267088/40060635 FAX: (91)33-22266817

Ahmedabad Office/M3 Solution Center (Ahmedabad)

A-104 & A-105, First Floor, Solitaire Corporate Park, Near
Divya Bhaskar Press, S.G. Road, Ahmedabad - 380 015,
INDIA

TEL: (91)079 - 29704902/903

Coimbatore Office (Coimbatore)

Regus, Srivari Srimath, 3rd Floor, Door No: 1045, Avinashi
Road, Coimbatore - 641 018, INDIA

TEL: (91)9345005663

Taiwan

Mitutoyo Taiwan Co., Ltd. / M3 Solution Center Taipei

4F., No.71, Zhouzi St., Neihu Dist., Taipei City 114, TAIWAN
(R.O.C.)

TEL: 886(2)5573-5900 FAX: 886(2)8752-3267

Taichung Branch / M3 Solution Center Taichung

1F., No.758, Zhongming S. Rd., South Dist., Taichung City 402,
TAIWAN(R.O.C.)

TEL: 886(4)2262-9188 FAX: 886(4)2262-9166

Kaohsiung Branch / M3 Solution Center Kaohsiung

1F., No.31-1, Haibian Rd., Lingya Dist., Kaohsiung City 802,
TAIWAN (R.O.C.)

TEL: 886(7)334-6168 FAX: 886(7)334-6160

South Korea

Mitutoyo Korea Corporation

Head Office / M3 Solution Center

(Sanbon-Dong, Geumjeong High View Build.), 6F, 153-8,
Ls-Ro, Gunpo-Si, Gyeonggi-Do, 15808 KOREA

TEL: 82(31)361-4200 FAX: 82(31)361-4202

Busan Office / M3 Solution Center

(3150-3, Daejeo 2-dong) 8, Yutongdanji 1-ro 49beon-gil,
Gangseo-gu, Busan, 46721 KOREA

TEL: 82(51)718-2140 FAX: 82(51)324-0104

Daegu Office / M3 Solution Center

(Galsan-dong, Daegu Business Center), 301-Ho, 217,
Seongseogongdan-ro, Dalseo-gu, Daegu 42704 KOREA

TEL: 82(53)593-5602 FAX: 82(53)593-5603

China

Mitutoyo Measuring Instruments (Shanghai) Co., Ltd.

12F, Nextage Business Center, No.1111 Pudong South Road,
Pudong New District, Shanghai 200120, CHINA

TEL: 86(21)5836-0718 FAX: 86(21)5836-0717

Suzhou Office / M3 Solution Center (Suzhou)

No. 46 Baiyu Road, Suzhou 215021, CHINA

TEL: 86(512)6522-1790 FAX: 86(512)6251-3420

Wuhan Office

Room 1701, Wuhan Wanda Center, No. 96, Linjiang Road,
Wuchang District, Wuhan Hubei 430060, CHINA
TEL: 86(27)8544-8631 FAX: 86(27)8544-6227

Chengdu Office

1-701, New Angle Plaza, 668# Jindong Road, Jinjiang District,
Chengdu, Sichuan 610066, CHINA
TEL: 86(28)8671-8936 FAX: 86(28)8671-9086

Hangzhou Office

Room 804, Eastern International Business Center Building 1,
No.600 Jinsha Road
Hangzhou Economic and Technological Development Zone,
310018, CHINA

TEL: 86(571)8288-0319 FAX: 86(571)8288-0320

Tianjin Office / M3 Solution Center Tianjin

Room D 12/F, TEDA Building, No.256 Jie-fang Nan Road
Hexi District, Tianjin 300042, CHINA

TEL: 86(22)5888-1700 FAX: 86(22)5888-1701

Changchun Office

Room 815, 8F, Building A1, Upper East International
No.3000 Dongsheng Street, Erdao District, Changchun, Jilin,
130031, CHINA

TEL: 86(431)8192-6998 FAX: 86(431)8192-6998

Chongqing Office

Room 1312, Building 3, Zhongyu Plaza, No.86, Hongjin
Avenue, Longxi Street, Yubei District, Chongqing, 400000,
CHINA

TEL: 86(23)6595-9950 FAX: 86(23)6595-9950

Qingdao Office

Room 638, 6F, No.192 Zhengyang Road, Chengyang District,
Qingdao, Shandong, 266109, CHINA

TEL: 86(532)8096-1936 FAX: 86(532)8096-1937

Xi'an Office

Room 805, Xi'an International Trade Center, No. 196
Xiaozhai East Road, Xi'an, 710061, CHINA

TEL: 86(29)8538-1380 FAX: 86(29)8538-1381

Dalian Office / M3 Solution Center Dalian

Room 1008, Grand Central IFC, No.128 Jin ma Road,
Economic Development Zone, Dalian 116600, CHINA

TEL: 86(411)8718 1212 FAX: 86(411)8754-7587

Zhengzhou Office

Room1801,18/F,Unit1,Building No.23, Shangwu Inner Ring
Road, Zhengdong New District,Zhengzhou City, Henan
Province, 450018,CHINA

TEL: 86(371)6097-6436 FAX: 86(371)6097-6981

Mitutoyo Leepport Metrology (Hong Kong) Limited

Room 818, 8/F, Vanta Industrial Centre, No.21-33, Tai Lin Pai
Road, Kwai Chung, NT, Hong Kong

TEL: 86(852)2992-2088 FAX: 86(852)2670-2488

Mitutoyo Leepport Metrology (Dongguan) Limited /

M3 Solution Center Dongguan

No.26, Guan Chang Road, Chong Tou Zone, Chang An Town,

Dong Guan, 523855 CHINA

TEL: 86(769)8541 7715 FAX: 86(769)-8541 7745

Mitutoyo Leepport Metrology (Dongguan) Limited – Fuzhou office

Room 2104, City Commercial Centre, No.129 Wu Yi Road N.,
Fuzhou City, Fujian Province, CHINA

TEL: 86 591 8761 8095 FAX: 86 591 8761 8096

Mitutoyo Leepport Metrology (Dongguan) Limited – Changsha office

Room 2207, Shiner International Plaza, No. 88, Kaiyuan
Middle Road, Changsha City, Hunan, China

TEL: 86 731 8401 9276 FAX: 86 731 8401 9376

Mitutoyo Measuring Instruments (Suzhou) Co., Ltd.

No. 46 Baiyu Road, Suzhou 215021, CHINA

TEL: 86(512)6252-2660 FAX: 86(512)6252-2580

U.S.A.

Mitutoyo America Corporation

965 Corporate Boulevard, Aurora, IL 60502, U.S.A.

TEL: 1-(630)820-9666 Toll Free No. 1-(888)648-8869

FAX: 1-(630)978-3501

M3 Solution Center-Illinois

965 Corporate Boulevard, Aurora, IL 60502, U.S.A.

TEL: 1-(888)648-8869 FAX: 1-(630)978-3501

M3 Solution Center-Ohio

6220 Hi-Tek Court, Mason, OH 45040, U.S.A.

TEL: 1-(888)648-8869 FAX: 1-(513)754-0718

M3 Solution Center-Michigan

46850 Magellan Drive, Suite 100, Novi, MI 48377, U.S.A.

TEL: 1-(888)648-8869 FAX: 1-(248)926-0928

M3 Solution Center-California

16925 E. Gale Avenue, City of Industry, CA 91745, U.S.A.

TEL: 1-(888)648-8869 FAX: 1-(626)369-3352

M3 Solution Center-North Carolina

11515 Vanstory Drive, Suite 140, Huntersville, NC 28078, U.S.A.

TEL: 1-(888)648-8869 FAX: 1-(704)875-9273

M3 Solution Center-Alabama

2100 Riverchase Center, Suite 106, Hoover, AL 35244, U.S.A

TEL: 1-(888)648-8869 FAX: 1-(205)988-3423

M3 Solution Center-Washington

1000 SW 34th Street Suite G, Renton, WA 98057 U.S.A.

TEL: 1-(888)648-8869

M3 Solution Center-Texas

4560 Kendrick Plaza Drive, Suite 120, Houston, TX 77032,
U.S.A.

TEL: 1-(888)648-8869 FAX: 1-(281)227-0937

M3 Solution Center-Massachusetts

753 Forest Street, Suite 110, Marlborough, MA 01752, U.S.A.

TEL: 1-(888)648-8869 FAX: 1-(508)485-0782

Mitutoyo America Corporation Calibration Lab

965 Corporate Boulevard, Aurora, IL 60502, U.S.A.

TEL: 1-(888)648-8869 FAX: 1-(630)978-6477

SERVICE NETWORK

As of Jan 2019

Micro Encoder, Inc.

11533 NE 118th Street, Kirkland, WA 98034-7111, U.S.A.
TEL: 1-(425)821-3906 FAX: 1-(425)821-3228

Micro Encoder Los Angeles, Inc.

16925 E. Gale Avenue, City of Industry, CA 91745-1806 U.S.A.
TEL: 1-626-961-9661 FAX: 1-626-333-8019

Canada

Mitutoyo Canada Inc.

2121 Meadowvale Blvd., Mississauga, Ont. L5N 5N1.,
CANADA
TEL: 1-(905)821-1261 FAX: 1-(905)821-4968

Montreal Office

7075 Place Robert-Joncas Suite 129, Montreal, Quebec H4M
2Z2, CANADA
TEL: 1-(514)337-5994 FAX: 1-(514)337-4498

Brazil

Mitutoyo Sul Americana Ltda.

Head office / M3 Solution Center / Factory

Rodovia Índio Tibiriça 1555, Bairro Raffo, CEP 08655-000
Suzano – SP, Brasil
TEL: 55(11) 5643- 0040

Argentina

Mitutoyo Sul Americana Ltda.

Argentina Branch / M3 Solution Center

Av. B. Mitre 891/899 – C.P. (B1603CQI) Vicente López –Pcia.
Buenos Aires – Argentina
TEL: 54(11)4730-1433 FAX: 54(11)4730-1411

Sucursal Cordoba / M3 Solution Center

Av. Amadeo Sabattini, 1296, esq. Madrid Bº Crisol Sur – CP
5000, Cordoba, ARGENTINA
TEL/FAX: 54(351)456-6251

Mexico

Mitutoyo Mexicana, S.A. de C.V.

Prolongación Industria Eléctrica No. 15 Parque Industrial
Naucalpan
Naucalpan de Juárez, Estado de México C.P. 53370, MÉXICO
TEL: 52(01-55)5312-5612

Monterrey Office/ M3 Solution Center Monterrey

Blv. Interamericana No. 103, Parque Industrial FINSA,
C.P. 66636 Apodaca, N.L., MÉXICO
TEL: 52(01-81) 8398-8227/8228/8242/8244
FAX: 52(01-81) 8398-8226

Tijuana Office/ M3 Solution Center Tijuana

Calle José María Velazco 10501-C, Col. Cd. Industrial Nueva
Tijuana, C.P. 22500 Tijuana, B.C., MÉXICO
TEL: 52(01-664) 647-5024

Querétaro Office / M3 Solution Center Querétaro

Av. Cerro Blanco No.500-1, Colonia Centro Sur, Querétaro,
Querétaro, C.P. 76090, MÉXICO

TEL: 52(01-442)340-8018, 340-8019 and 340-8020

FAX: 52(01-442)340-8017

Mitutoyo Mexicana, S.A. de C.V. Querétaro Calibration Laboratory

Av. Cerro Blanco 500 30 Centro Sur, Querétaro, Querétaro,
C.P. 76090, MÉXICO
TEL: 52(01-442)340-8018, 340-8019 and 340-8020
FAX: 52(01-442)340-8017

Aguascalientes Office / M3 Solution Center

Av. Aguascalientes No. 622, Local 15 Centro Comercial El
Cilindro Fracc. Pulgas Pandas Norte, C.P. 20138,
Aguascalientes, Ags. MÉXICO
TEL: 52(01-449)174-4140 and 174-4143

Irapuato Office / M3 Solution Center

Boulevard a Villas de Irapuato No. 1460 L.1 Col. Ejido
Irapuato C.P. 36643
Irapuato, Gto., MÉXICO
TEL: 52(01-462)144-1200 and 144-1400